

Compact SPD
ProLed 275 (3+1) 16 A
 Class III • Type 3



Location of Use: Sub-distribution Boards
 Network Systems: TN-S
 Mode of Protection: L-N,N-PE
 Surge Ratings: $U_{oc}/I_{cw} = 6\text{ kV}/3\text{ kA}$
 IEC/EN Category: Class III / Type 3
 Protective Elements: MOV and GDT
 Housing: Compact Design
 Compliance: IEC 61643-11:2011
 EN 61643-11:2012

Technical Data

ProLed 275 (3+1) 16 A

275

Electrical

Nominal AC Voltage (50/60 Hz)	U_o	230 V
Maximum Continuous Operating Voltage (AC)	U_c	275 V
Maximum Rated Load Current	I_L	16 A
Open Circuit Voltage of the Combination Wave Generator (1.2/50 μ s)	U_{oc}	6 kV
Short-Circuit Current of the Combination Wave Generator (8/20 μ s)	I_{cw}	3 kA
Voltage Protection Level	(L-N) U_p	1.2 kV
	(N-PE) U_p	1.8 kV
Response Time	(L-N)/(N-PE) t_A	< 25 ns / < 100 ns
Back-Up Fuse (if mains > 16 A)		MCB/B 16 A
Short-Circuit Current Rating (50 Hz)	I_{SCCR}	1.5 kA
TOV Withstand 5s	U_T	337 V
Number of Ports		2

Mechanical & Environmental

Temperature Range	T_a	-40 °F to +185 °F [-40 °C to +85 °C]
Permissible Humidity	RH	5%...95%
Conductor Cross Section		14 AWG (Stranded) / 2.5 mm ² (Stranded)
Mounting		35 mm DIN Rail, EN 60715
Degree of Protection		IP 20
Housing Material		Thermoplastic: Extinguishing Degree UL 94 V-0
Thermal Protection		Yes
Operation Status Fault Indication		Green / Red LED
Remote Contacts (RC)		Yes
RC Switching Capacity		10 A/230 V AC
RC Terminal Cross Section (max)		14 AWG (Stranded) / 2.5 mm ² (Stranded)
RC Terminal Screw Torque		4.4 lbf-in [0.5 Nm]

Order Information

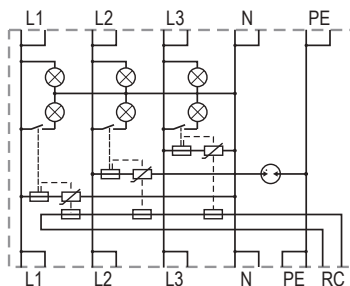
Order Code	275
ProLed 275 (3+1) 16 A	130 304

ProLed 275 (3+1) 16A

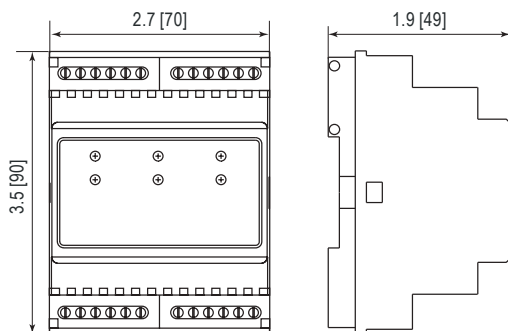
Internal Configuration

Legend

- L Line
- N Neutral
- PE Protective Earth
- RC Remote Contacts



Dimensions & Packaging [mm]



Dimensions & Packaging

ProLed 275 (3+1) 16A		275
Single Unit Weight	pounds [grams]	0.361 [164]
Single Unit DIN 43880 Dimension		4 TE
Packaging Dimensions (H x W x L)		4.2 x 3 x 3.1" [109 x 77 x 80 mm]
Minimum Order Quantity		3 Units

inches
[mm]

Information contained in this document is subject to change at any time without notice.

