

Pluggable Multi-Pole SPD
ProTec T2 2+0
 Class II • Type 2 • Type 1CA



Location of Use: Sub-Distribution Boards
 Network Systems: TN-S
 Mode of Protection: L-PE, N-PE
 Surge Ratings: $I_n = 20\text{ kA (8/20}\mu\text{s)}$
 IEC/EN/UL Category: Class II / Type 2 / Type 1CA
 Protective Elements: High Energy MOV
 Housing: Pluggable Design
 Compliance: IEC 61643-11:2011
 EN 61643-11:2012
 UL 1449, 4th edition

Technical Data

ProTec T2-xxx-2+0(-R)		75	150	300	350	480	750
IEC Electrical							
Nominal AC Voltage (50/60Hz)	U_o/U_n	60V	120V	240V	277V	400V	600V
Maximum Continuous Operating Voltage (AC)	U_c	75V	150V	300V	350V	480V	750V
Nominal Discharge Current (8/20 μs)	I_n	20 kA	20 kA	20 kA	20 kA	20 kA	20 kA
Maximum Discharge Current (8/20 μs)	I_{max}	50 kA	50 kA	50 kA	50 kA	50 kA	35 kA
Voltage Protection Level	U_p	800V	1250V	1500V	1750V	2300V	3400V
Response Time	t_A	< 25ns					
Back-Up Fuse (max)		315 A / 250 A gG					
Short-Circuit Current Rating (AC)	I_{SCCR}	25 kA / 50 kA					
TOV Withstand 5s	U_T	114V	229V	337V	403V	581V	871V
TOV 120min	U_T	114V	229V	442V	529V	762V	1143V
	mode	Withstand	Withstand	Safe Fail	Safe Fail	Safe Fail	Safe Fail
Number of Ports		1					

UL Electrical							
Maximum Continuous Operating Voltage (AC)	MCOV	75V	150V	300V	350V	480V	750V
Voltage Protection Rating	VPR	330V	600V	900V	1000V	1500V	2500V
Nominal Discharge Current (8/20 μs)	I_n	20 kA	20 kA	20 kA	20 kA	20 kA	20 kA
Short-Circuit Current Rating (AC)	SCCR	100 kA	200 kA	150 kA	200 kA	200 kA	200 kA

Mechanical							
Operating Temperature Range	T_a	-40 °F to +185 °F [-40 °C to +85 °C]					
Permissible Operating Humidity	RH	5%...95%					
Altitude		13123 ft [4000 m]					
Terminal Screw Torque	M_{max}	39.9 lbf-in [4.5 Nm]					
Conductor Cross Section (max)		2 AWG (Solid, Stranded) / 4 AWG (Flexible) 35 mm ² (Solid, Stranded) / 25 mm ² (Flexible)					
Mounting		35 mm DIN Rail, EN 60715					
Degree of Protection		IP 20					
Housing Material		Thermoplastic: Extinguishing Degree UL 94 V-0					
Thermal Protection		Yes					
Operating State / Fault Indication		Green Flag / Not Green Flag					
Remote Contacts (RC)		Optional					
RC Switching Capacity		AC: 250V/1A, 125V/1A; DC: 48V/0.5A, 24V/0.5A, 12V/0.5A					
RC Conductor Cross Section (max)		16 AWG (Solid) / 1.5 mm ² (Solid)					

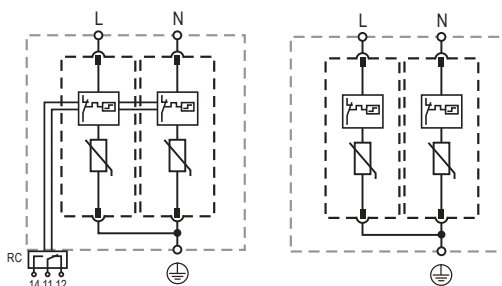
Order Information							
Order Code		75	150	300	350	480	750
ProTec T2-xxx-2+0		59.0343	59.0081	59.0083	59.0085	59.0087	59.0089
ProTec T2-xxx-2+0-R (with remote contacts)		59.0344	59.0082	59.0084	59.0086	59.0088	59.0090
ProTec T2-xxx-P		59.0063	59.0064	59.0065	59.0066	59.0067	59.0068

ProTec T2 2+0

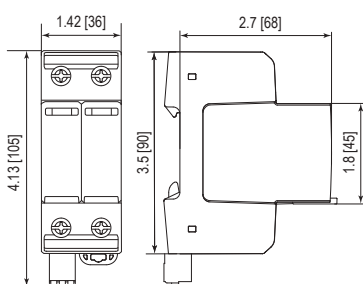
Internal Configuration

Legend

- L Line
- N Neutral
- ⊕ Protective Earth
- RC Remote Contacts Optional



Dimensions & Packaging

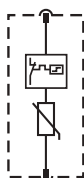


Dimensions & Packaging

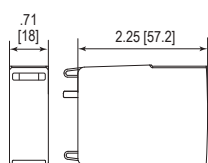
		75	150	300	350	480	750
Single Unit Weight	pounds	.508	.525	.556	.578	.600	.671
	grams	230	238	252	262	272	304
		75	150	300	350	480	750
Single Unit Weight	pounds	.538	.556	.587	.609	.631	.702
	grams	244	252	266	276	286	318
Single Unit DIN 43880 Dimension		2 TE					
Packaging Dimensions (HxWxL)		4.3 x 4.5 x 13.8" [109 x 115 x 352 mm]					
Minimum Order Quantity		7 Units					

Plug Internal Configuration

ProTec T2-xxx-P



Dimensions & Packaging



Dimensions & Packaging

		75	150	300	350	480	750
Single Unit Weight	pounds	.111	.120	.135	.146	.157	.192
	grams	50	54	61	66	71	87
Single Unit DIN 43880 Dimension		1 TE					
Packaging Dimensions (HxWxL)		4.3 x 4.5 x 13.8" [109 x 115 x 352 mm]					
Minimum Order Quantity		28 Units					

inches
[mm]

Information contained in this document is subject to change at any time without notice.

