

Pluggable Multi-Pole SPD  
**ProTec T2 3+1**  
 Class II • Type 2 • Type 1CA



Location of Use: Sub-Distribution Boards  
 Network Systems: TT, TN-S  
 Mode of Protection: L-N, N-PE  
 Surge Ratings:  $I_n = 20\text{kA}$  (8/20 $\mu\text{s}$ )  
 IEC/EN/UL Category: Class II / Type 2 / Type 1CA  
 Protective Elements: High Energy MOV and GDT  
 Housing: Pluggable Design  
 Compliance: IEC 61643-11:2011  
 EN 61643-11:2012  
 UL 1449, 4th edition

**Technical Data**

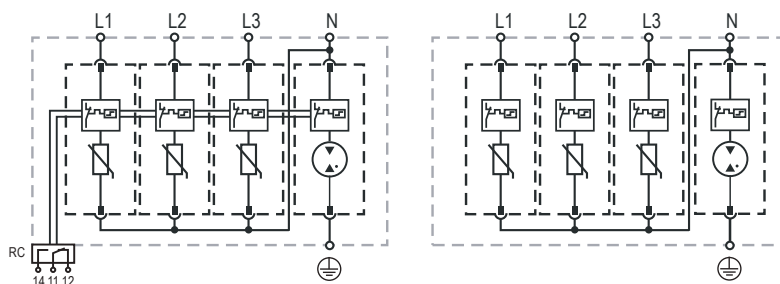
ProTec T2-xxx-3+1(-R)		300	350
<b>IEC Electrical</b>			
Nominal AC Voltage (50/60Hz)	$U_o/U_n$	240 V	277 V
Maximum Continuous Operating Voltage (AC)	(L-N) $U_c$	300 V	350 V
	(N-PE) $U_c$	305 V	305 V
Nominal Discharge Current (8/20 $\mu\text{s}$ )	(L-N)/(N-PE) $I_n$	20 kA / 40 kA	20 kA / 40 kA
Maximum Discharge Current (8/20 $\mu\text{s}$ )	(L-N)/(N-PE) $I_{max}$	50 kA / 65 kA	50 kA / 65 kA
Voltage Protection Level	(L-N)/(N-PE) $U_p$	1500 V / 1500 V	1750 V / 1500 V
Follow Current Interrupt Rating	(N-PE) $I_{fi}$	100 A <sub>RMS</sub>	
Response Time	(L-N)/(N-PE) $t_A$	< 25 ns / < 100 ns	
Back-Up Fuse (max)		315 A / 250 A gG	
Short-Circuit Current Rating (AC)	(L-N) $I_{SCCR}$	25 kA / 50 kA	
TOV Withstand 5s	(L-N) $U_T$	337 V	403 V
TOV 120min	(L-N) $U_T / mode$	442 V / safe fail	529 V / safe fail
TOV Withstand 200ms	(N-PE) $U_T$	1200 V	
Number of Ports		1	
<b>UL Electrical</b>			
Maximum Continuous Operating Voltage (AC)	(L-N)/(N-PE) MCOV	300 V / 305 V	350 V / 305 V
Voltage Protection Rating	(L-N)/(N-PE) VPR	900 V / 1000 V	1000 V / 1000 V
Nominal Discharge Current (8/20 $\mu\text{s}$ )	(L-N)/(N-PE) $I_n$	20 kA / 20 kA	
Short-Circuit Current Rating (AC)	(L-N) SCCR	150 kA	200 kA
<b>Mechanical</b>			
Operating Temperature Range	$T_a$	-40 °F to +185 °F [-40 °C to +85 °C]	
Permissible Operating Humidity	RH	5%...95%	
Altitude		13123 ft [4000 m]	
Terminal Screw Torque	$M_{max}$	39.9 lbf-in [4.5 Nm]	
Conductor Cross Section (max)		2 AWG (Solid, Stranded) / 4 AWG (Flexible)	
		35 mm <sup>2</sup> (Solid, Stranded) / 25 mm <sup>2</sup> (Flexible)	
Mounting		35 mm DIN Rail, EN 60715	
Degree of Protection		IP 20	
Housing Material		Thermoplastic: Extinguishing Degree UL 94 V-0	
Thermal Protection		Yes	
Operating State / Fault Indication		Green Flag / Not Green Flag	
Remote Contacts (RC)		Optional	
RC Switching Capacity		AC: 250V/1A, 125V/1 A; DC: 48V/0.5 A, 24V/0.5 A, 12V/0.5 A	
RC Conductor Cross Section (max)		16 AWG (Solid) / 1.5 mm <sup>2</sup> (Solid)	
<b>Order Information</b>			
Order Code		300	350
ProTec T2-xxx-3+1		59.0121	59.0123
ProTec T2-xxx-3+1-R (with remote contacts)		59.0122	59.0124
ProTec T2-xxx-P		59.0065	59.0066
ProTube T2-40-P		59.0273	59.0273

## ProTec T2 3+1

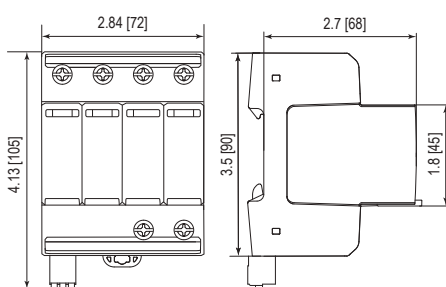
### Internal Configuration

#### Legend

- L Line
- N Neutral
- ⊕ Protective Earth
- RC Remote Contacts Optional



### Dimensions & Packaging



#### Dimensions & Packaging

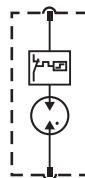
	300	350
<b>ProTec T2-xxx-3+1</b>		
Single Unit Weight	pounds [grams] 1.052 [477]	1.085 [492]
<b>ProTec T2-xxx-3+1-R</b>		
Single Unit Weight	pounds [grams] 1.072 [486]	1.105 [501]
Single Unit DIN 43880 Dimension	4 TE	
Packaging Dimensions (HxWxL)	4.3 x 4.5 x 13.8" [109 x 115 x 352 mm]	
Minimum Order Quantity	4 Units	

### Plug Internal Configuration

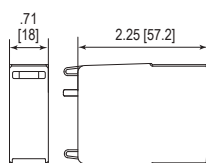
#### ProTec T2-xxx-P



#### ProTube T2-40-P



### Dimensions & Packaging



#### Dimensions & Packaging

	300	350
<b>ProTec T2-xxx-P</b>		
Single Unit Weight	pounds [grams] .135 [61]	.146 [66]
<b>ProTube T2-40-P</b>		
Single Unit Weight	pounds [grams] .093 [42]	
Single Unit DIN 43880 Dimension	1 TE	
Packaging Dimensions (HxWxL)	4.3 x 4.5 x 13.8" [109 x 115 x 352 mm]	
Minimum Order Quantity	28 Units	

inches  
[mm]

Information contained in this document is subject to change at any time without notice.



# Raycap

www.raycap.com

© 2017 Raycap All rights reserved.  
G29-00-403 171020