

Pluggable Multi-Pole SPD
SafeTec T2 3+0
 Class II • Type 2 • Type 1CA



Location of Use: Sub-distribution Boards
 Network Systems: TN-C
 Mode of Protection: L-PEN
 Surge Ratings: $I_n = 20 \text{ kA (8/20}\mu\text{s)}$
 $I_{max} = \text{up to } 50 \text{ kA (8/20}\mu\text{s)}$
 IEC/EN/UL Category: Class II / Type 2 / Type 1CA
 Protective Elements: High Energy MOV and GDT
 Safety: Patented Current Limiting
 Housing: Pluggable Design
 Compliance: IEC 61643-11:2011
 EN 61643-11:2012
 UL 1449 4th Edition

Technical Data

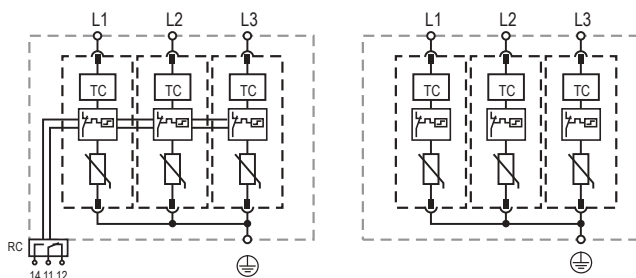
SafeTec T2-xxx-3+0(-R)		150	300	350	480	550	750	880
IEC Electrical								
Nominal AC Voltage (50/60Hz)	U_o/U_n	120V	240V	277V	400V	400V	600V	600V
Maximum Continuous Operating Voltage (AC)	U_c	150V	300V	350V	480V	550V	750V	880V
Nominal Discharge Current (8/20 μs)	I_n	20kA	20kA	20kA	20kA	20kA	20kA	20kA
Maximum Discharge Current (8/20 μs)	I_{max}	50kA	50kA	50kA	50kA	50kA	35kA	35kA
Voltage Protection Level	U_p	1250V	1650V	1750V	2300V	2500V	3500V	3600V
Response Time	t_A	< 25 ns						
Back-Up Fuse (max)		315 A/250 A gG						
Short-Circuit Current Rating (AC)	I_{SCCR}	25 kA/50 kA						
TOV Withstand 120min	U_T	255V	442V	529V	762V	918V	1200V	1250V
Number of Ports		1						
UL Electrical								
Maximum Continuous Operating Voltage (AC)	MCOV	150V	300V	350V	480V	550V	750V	880V
Voltage Protection Rating	VPR	700V	1200V	1200V	1500V	1800V	2500V	2500V
Nominal Discharge Current (8/20 μs)	I_n	20kA	20kA	20kA	20kA	20kA	20kA	20kA
Short-Circuit Current Rating (AC)	SCCR	200kA	150kA	200kA	200kA	200kA	200kA	200kA
Mechanical & Environmental								
Operating Temperature Range	T_a	-40 °F to +185 °F [-40 °C to +85 °C]						
Permissible Operating Humidity	RH	5%...95%						
Altitude (max)		13123 ft [4000 m]						
Terminal Screw Torque	M_{max}	39.9 lbf-in [4.5 Nm]						
Conductor Cross Section (max)		2 AWG (Solid, Stranded) / 4 AWG (Flexible) 35 mm ² (Solid, Stranded) / 25 mm ² (Flexible)						
Mounting		35 mm DIN Rail, EN 60715						
Degree of Protection		IP 20						
Housing Material		Thermoplastic: Extinguishing Degree UL 94 V-0						
Thermal Protection		Yes						
Operating State / Fault Indication		Green Flag / Not Green Flag						
Remote Contacts (RC)		Optional						
RC Switching Capacity		AC: 250V/1A, 125V/1 A; DC: 48V/0.5A, 24V/0.5A, 12V/0.5 A						
RC Conductor Cross Section (max)		16 AWG (Solid) / 1.5 mm ² (Solid)						
Order Information								
Order Code		150	300	350	480	550	750	880
SafeTec T2-xxx-3+0		59.0162	59.0164	59.0166	59.0168	59.0170	59.0172	59.0174
SafeTec T2-xxx-3+0-R (with remote contacts)		59.0163	59.0165	59.0167	59.0169	59.0171	59.0173	59.0175
SafeTec T2-xxx-P		59.0126	59.0127	59.0128	59.0129	59.0299	59.0130	59.0131

SafeTec T2 3+0

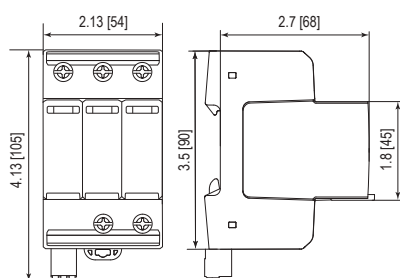
Internal Configuration

Legend

- L Line
- ⊕ Protective Earth
- RC Remote Contacts Optional
- TC Thermal Control Function



Dimensions & Weights

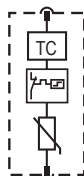


Weights

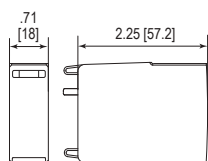
		150	300	350	480	550	750	880
Single Unit Weight	pounds	.801	.834	.887	.907	.940	1.006	1.006
	grams	363	378	402	411	426	456	456
		150	300	350	480	550	750	880
Single Unit Weight	pounds	.823	.856	.909	.929	.962	1.028	1.028
	grams	373	388	412	421	436	466	466
Single Unit DIN 43880 Dimension		3 TE						
Packaging Dimensions (HxWxL)		4.3 x 4.5 x 13.8" [109 x 115 x 352 mm]						
Minimum Order Quantity		5 Units						

Plug Internal Configuration

SafeTec T2-xxx-P



Dimensions & Weights



Weights

		150	300	350	480	550	750	880
Single Unit Weight	pounds	.133	.144	.161	.168	.179	.201	.201
	grams	60	65	73	76	81	91	91
Single Unit DIN 43880 Dimension		1 TE						
Packaging Dimensions (HxWxL)		4.3 x 4.5 x 13.8" [109 x 115 x 352 mm]						
Minimum Order Quantity		28 Units						

inches
[mm]

Information contained in this document is subject to change at any time without notice.

