

Pluggable Multi-Pole SPD  
**SafeTec T2 4+0**  
 Class II • Type 2 • Type 1CA



Location of Use: Sub-distribution Boards  
 Network Systems: TN-S  
 Mode of Protection: L-PE, N-PE  
 Surge Ratings:  $I_n = 20\text{ kA (8/20}\mu\text{s)}$   
 $I_{max} = 50\text{ kA (8/20}\mu\text{s)}$   
 IEC/EN/UL Category: Class II / Type 2 / Type 1CA  
 Protective Elements: High Energy MOV and GDT  
 Safety: Patented Current Limiting  
 Housing: Pluggable Design  
 Compliance: IEC 61643-11:2011  
 EN 61643-11:2012  
 UL 1449 4<sup>th</sup> Edition

**Technical Data**

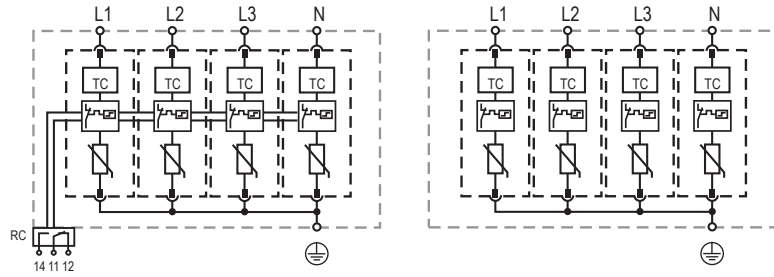
SafeTec T2-xxx-4+0(-R)		150	300	350	480	550
<b>IEC Electrical</b>						
Nominal AC Voltage (50/60Hz)	$U_o/U_n$	120 V	240 V	277 V	400 V	400 V
Maximum Continuous Operating Voltage (AC)	$U_c$	150 V	300 V	350 V	480 V	550 V
Nominal Discharge Current (8/20 $\mu\text{s}$ )	$I_n$	20 kA	20 kA	20 kA	20 kA	20 kA
Maximum Discharge Current (8/20 $\mu\text{s}$ )	$I_{max}$	50 kA	50 kA	50 kA	50 kA	50 kA
Voltage Protection Level	$U_p$	1250 V	1650 V	1750 V	2300 V	2500 V
Response Time	$t_A$	< 25 ns				
Back-Up Fuse (max)		315 A/250 A gG				
Short-Circuit Current Rating (AC)	$I_{SCCR}$	25 kA/50 kA				
TOV Withstand 120min	$U_T$	255 V	442 V	529 V	762 V	918 V
Number of Ports		1				
<b>UL Electrical</b>						
Maximum Continuous Operating Voltage (AC)	MCOV	150 V	300 V	350 V	480 V	550 V
Voltage Protection Rating	VPR	700 V	1200 V	1200 V	1500 V	1800 V
Nominal Discharge Current (8/20 $\mu\text{s}$ )	$I_n$	20 kA	20 kA	20 kA	20 kA	20 kA
Short-Circuit Current Rating (AC)	SCCR	200 kA	150 kA	200 kA	200 kA	200 kA
<b>Mechanical &amp; Environmental</b>						
Operating Temperature Range	$T_a$	-40 °F to +185 °F [-40 °C to +85 °C]				
Permissible Operating Humidity	RH	5%...95%				
Altitude (max)		13123 ft [4000 m]				
Terminal Screw Torque	$M_{max}$	39.9 lbf-in [4.5 Nm]				
Conductor Cross Section (max)		2 AWG (Solid, Stranded) / 4 AWG (Flexible) 35 mm <sup>2</sup> (Solid, Stranded) / 25 mm <sup>2</sup> (Flexible)				
Mounting		35 mm DIN Rail, EN 60715				
Degree of Protection		IP 20				
Housing Material		Thermoplastic: Extinguishing Degree UL 94 V-0				
Thermal Protection		Yes				
Operating State / Fault Indication		Green Flag / Not Green Flag				
Remote Contacts (RC)		Optional				
RC Switching Capacity		AC: 250V/1A, 125V/1A; DC: 48V/0.5A, 24V/0.5A, 12V/0.5A				
RC Conductor Cross Section (max)		16 AWG (Solid) / 1.5 mm <sup>2</sup> (Solid)				
<b>Order Information</b>						
Order Code		150	300	350	480	550
SafeTec T2-xxx-4+0		59.0176	59.0178	59.0180	59.0182	59.0184
SafeTec T2-xxx-4+0-R (with remote contacts)		59.0177	59.0179	59.0181	59.0183	59.0185
SafeTec T2-xxx-P		59.0126	59.0127	59.0128	59.0129	59.0299

## SafeTec T2 4+0

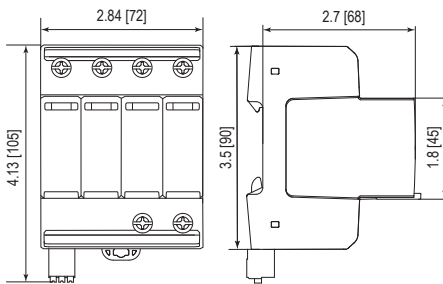
### Internal Configuration

#### Legend

- L Line
- N Neutral
- ⊕ Protective Earth
- RC Remote Contacts Optional
- TC Thermal Control Function



### Dimensions & Weights

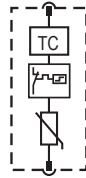


#### Weights

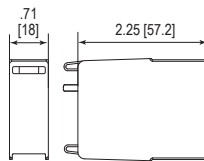
		150	300	350	480	550
Single Unit Weight	pounds	1.085	1.129	1.200	1.226	1.270
	grams	492	512	544	556	576
		<b>150</b>	<b>300</b>	<b>350</b>	<b>480</b>	<b>550</b>
Single Unit Weight	pounds	1.105	1.149	1.220	1.246	1.290
	grams	501	521	553	565	585
Single Unit DIN 43880 Dimension		4 TE				
Packaging Dimensions (HxWxL)		4.3 x 4.5 x 13.8" [109 x 115 x 352 mm]				
Minimum Order Quantity		4 Units				

### Plug Internal Configuration

#### SafeTec T2-xxx-P



### Dimensions & Weights



#### Weights

		150	300	350	480	550
Single Unit Weight	pounds	.133	.144	.161	.168	.179
	grams	60	65	73	76	81
Single Unit DIN 43880 Dimension		1 TE				
Packaging Dimensions (HxWxL)		4.3 x 4.5 x 13.8" [109 x 115 x 352 mm]				
Minimum Order Quantity		28 Units				

inches  
[mm]

Information contained in this document is subject to change at any time without notice.

