

Pluggable Multi-Pole SPD
SafeTec T2 1+1
 Class II • Type 2 • Type 1CA



Location of Use: Sub-distribution Boards
 Network Systems: TT, TN-S
 Mode of Protection: L-N, N-PE
 Surge Ratings: $I_n = 20\text{ kA}/40\text{ kA}$ (8/20 μs)
 $I_{max} = 50\text{ kA}/65\text{ kA}$ (8/20 μs)
 IEC/EN/UL Category: Class II / Type 2 / Type 1CA
 Protective Elements: High Energy MOV and GDT
 Safety: Patented Current Limiting
 Housing: Pluggable Design
 Compliance: IEC 61643-11:2011
 EN 61643-11:2012
 UL 1449 4th Edition

Technical Data

SafeTec T2-xxx-1+1(-R)

		75	150	300	350
IEC Electrical					
Nominal AC Voltage (50/60Hz)	U_o/U_n	60 V	120 V	240 V	277 V
Maximum Continuous Operating Voltage (AC)	(L-N) U_c	75 V	150 V	300 V	350 V
	(N-PE) U_c	305 V	305 V	305 V	305 V
Nominal Discharge Current (8/20 μs)	(L-N)/(N-PE) I_n	20 kA/40 kA	20 kA/40 kA	20 kA/40 kA	20 kA/40 kA
Maximum Discharge Current (8/20 μs)	(L-N)/(N-PE) I_{max}	50 kA/65 kA	50 kA/65 kA	50 kA/65 kA	50 kA/65 kA
Voltage Protection Level	(L-N)/(N-PE) U_p	800 V/1500 V	1250 V/1500 V	1650 V/1500 V	1750 V/1500 V
Follow Current Interrupt Rating	(N-PE) I_{fi}	100 A _{RMS}			
Response Time	(L-N)/(N-PE) t_A	< 25 ns / < 100 ns			
Back-Up Fuse (max)		315 A/250 A gG			
Short-Circuit Current Rating (AC)	(L-N) I_{SCCR}	25 kA/50 kA			
TOV Withstand 120min	(L-N) U_T	150 V	255 V	442 V	529 V
TOV Withstand 200ms	(N-PE) U_T	1200 V			
Number of Ports		1			

UL Electrical

Maximum Continuous Operating Voltage (AC)	(L-N)/(N-PE) MCOV	75 V/305 V	150 V/305 V	300 V/305 V	350 V/305 V
Voltage Protection Rating	(L-N)/(N-PE) VPR	600 V/1000 V	700 V/1000 V	1200 V/1000 V	1200 V/1000 V
Nominal Discharge Current (8/20 μs)	(L-N)/(N-PE) I_n	20 kA/20 kA			
Short-Circuit Current Rating (AC)	(L-N) SCCR	85 kA	200 kA	150 kA	200 kA

Mechanical & Environmental

Operating Temperature Range	T_a	-40 °F to +185 °F [-40 °C to +85 °C]			
Permissible Operating Humidity	RH	5%...95%			
Altitude (max)		13123 ft [4000 m]			
Terminal Screw Torque	M_{max}	39.9 lbf-in [4.5 Nm]			
Conductor Cross Section (max)		2 AWG (Solid, Stranded) / 4 AWG (Flexible)			
		35 mm ² (Solid, Stranded) / 25 mm ² (Flexible)			
Mounting		35 mm DIN Rail, EN 60715			
Degree of Protection		IP 20			
Housing Material		Thermoplastic: Extinguishing Degree UL 94 V-0			
Thermal Protection		Yes			
Operating State / Fault Indication		Green Flag / Not Green Flag			
Remote Contacts (RC)		Optional			
RC Switching Capacity		AC: 250V/1A, 125V/1A; DC: 48V/0.5A, 24V/0.5A, 12V/0.5A			
RC Conductor Cross Section (max)		16 AWG (Solid) / 1.5 mm ² (Solid)			

Order Information

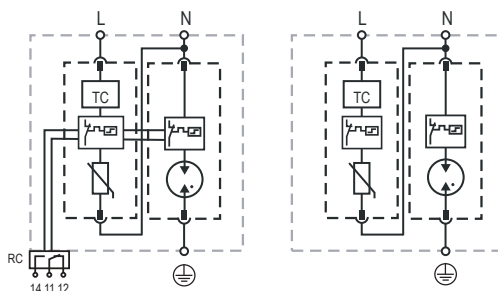
Order Code	75	150	300	350
SafeTec T2-xxx-1+1	59.0186	59.0188	59.0190	59.0192
SafeTec T2-xxx-1+1-R (with remote contacts)	59.0187	59.0189	59.0191	59.0193
SafeTec T2-xxx-P	59.0125	59.0126	59.0127	59.0128
SafeTube T2-40-P	59.0274	59.0274	59.0274	59.0274

SafeTec T2 1+1

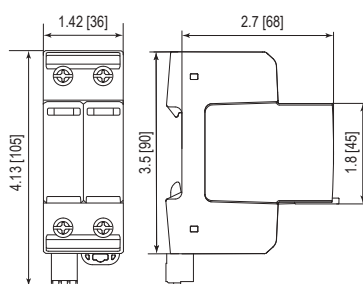
Internal Configuration

Legend

- L Line
- N Neutral
- ⊕ Protective Earth
- RC Remote Contacts Optional
- TC Thermal Control Function



Dimensions & Weights

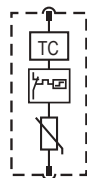


Weights

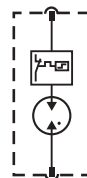
		75	150	300	350
SafeTec T2-xxx-1+1	Single Unit Weight	pounds .505	.514	.525	.543
		grams 229	233	238	246
SafeTec T2-xxx-1+1-R	Single Unit Weight	pounds .519	.527	.538	.556
		grams 235	239	244	252
Single Unit DIN 43880 Dimension		2 TE			
Packaging Dimensions (HxWxL)		4.3 x 4.5 x 13.8" [109 x 115 x 352 mm]			
Minimum Order Quantity		7 Units			

Plug Internal Configuration

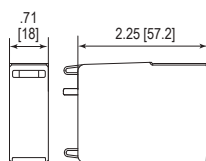
SafeTec T2-xxx-P



SafeTube T2-40-P



Dimensions & Weights



Weights

		75	150	300	350
SafeTec T2-xxx-P	Single Unit Weight	pounds .124	.133	.144	.161
		grams 56	60	65	73
SafeTube T2-40-P	Single Unit Weight	pounds .093	40		
		grams 42			
Single Unit DIN 43880 Dimension		1 TE			
Packaging Dimensions (HxWxL)		4.3 x 4.5 x 13.8" [109 x 115 x 352 mm]			
Minimum Order Quantity		28 Units			

inches
[mm]

Information contained in this document is subject to change at any time without notice.

