

DATA SHEET

Pluggable Multi-Pole SPD
SafeTec T2 3+1
 Class II • Type 2 • Type 1CA



Location of Use: Sub-distribution Boards
 Network Systems: TT, TN-S
 Mode of Protection: L-N, N-PE
 Surge Ratings: $I_n = 20\text{ kA}/40\text{ kA}$ (8/20 μs)
 $I_{max} = 50\text{ kA}/65\text{ kA}$ (8/20 μs)
 IEC/EN/UL Category: Class II / Type 2 / Type 1CA
 Protective Elements: High Energy MOV and GDT
 Safety: Patented Current Limiting
 Housing: Pluggable Design
 Compliance: IEC 61643-11:2011
 EN 61643-11:2012
 UL 1449 4th Edition

Technical Data

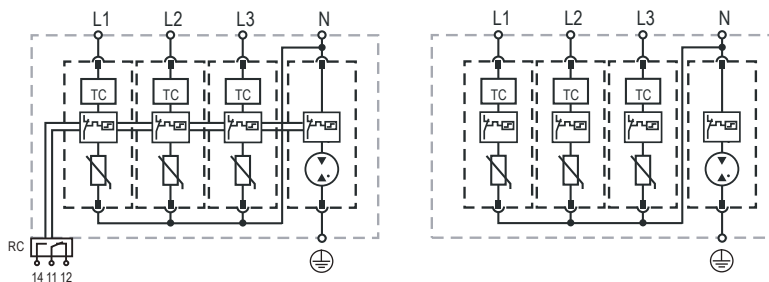
SafeTec T2-xxx-3+1(-R)		300	350
IEC Electrical			
Nominal AC Voltage (50/60Hz)	U_o/U_n	240 V	277 V
Maximum Continuous Operating Voltage (AC)	(L-N) U_c	300 V	350 V
	(N-PE) U_c	305 V	305 V
Nominal Discharge Current (8/20 μs)	(L-N)/(N-PE) I_n	20 kA/40 kA	20 kA/40 kA
Maximum Discharge Current (8/20 μs)	(L-N)/(N-PE) I_{max}	50 kA/65 kA	50 kA/65 kA
Voltage Protection Level	(L-N)/(N-PE) U_p	1650 V/1500 V	1750 V/1500 V
Follow Current Interrupt Rating	(N-PE) I_{fi}	100 A _{RMS}	
Response Time	(L-N)/(N-PE) t_A	< 25 ns / < 100 ns	
Back-Up Fuse (max)		315 A/250 A gG	
Short-Circuit Current Rating (AC)	(L-N) I_{SCCR}	25 kA/50 kA	
TOV Withstand 120min	(L-N) U_T	442 V	529 V
TOV Withstand 200ms	(N-PE) U_T	1200 V	
Number of Ports		1	
UL Electrical			
Maximum Continuous Operating Voltage (AC)	(L-N)/(N-PE) MCOV	300 V/305 V	350 V/305 V
Voltage Protection Rating	(L-N)/(N-PE) VPR	1200 V/1000 V	1200 V/1000 V
Nominal Discharge Current (8/20 μs)	(L-N)/(N-PE) I_n	20 kA/20 kA	
Short-Circuit Current Rating (AC)	(L-N) SCCR	150 kA	200 kA
Mechanical			
Operating Temperature Range	T_a	-40 °F to +185 °F [-40 °C to +85 °C]	
Permissible Operating Humidity	RH	5%...95%	
Altitude		13123 ft [4000 m]	
Terminal Screw Torque	M_{max}	39.9 lbf-in [4.5 Nm]	
Conductor Cross Section (max)		2 AWG (Solid, Stranded) / 4 AWG (Flexible)	
		35 mm ² (Solid, Stranded) / 25 mm ² (Flexible)	
Mounting		35 mm DIN Rail, EN 60715	
Degree of Protection		IP 20	
Housing Material		Thermoplastic: Extinguishing Degree UL 94 V-0	
Thermal Protection		Yes	
Operating State / Fault Indication		Green Flag / Not Green Flag	
Remote Contacts (RC)		Optional	
RC Switching Capacity		AC: 250V/1A, 125V/1 A; DC: 48V/0.5 A, 24V/0.5 A, 12V/0.5 A	
RC Conductor Cross Section (max)		16 AWG (Solid) / 1.5 mm ² (Solid)	
Order Information			
Order Code		300	350
SafeTec T2-xxx-3+1		59.0198	59.0200
SafeTec T2-xxx-3+1-R (with remote contacts)		59.0199	59.0201
SafeTec T2-xxx-P		59.0127	59.0128
SafeTube T2-40-P		59.0274	59.0274

SafeTec T2 3+1

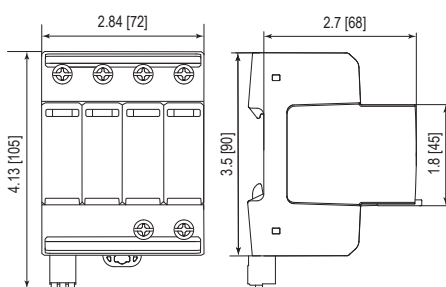
Internal Configuration

Legend

- L Line
- N Neutral
- ⊕ Protective Earth
- RC Remote Contacts Optional
- TC Thermal Control Function



Dimensions & Weights

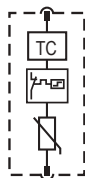


Weights

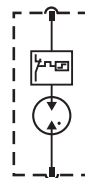
	300	350
SafeTec T2-xxx-3+1		
Single Unit Weight	pounds [grams] .792 [359]	.810 [367]
SafeTec T2-xxx-3+1-R		
Single Unit Weight	pounds [grams] .812 [368]	.829 [376]
Single Unit DIN 43880 Dimension	4 TE	
Packaging Dimensions (HxWxL)	4.3 x 4.5 x 13.8" [109 x 115 x 352 mm]	
Minimum Order Quantity	4 Units	

Plug Internal Configuration

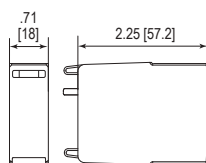
SafeTec T2-xxx-P



SafeTube T2-40-P



Dimensions & Weights



Weights

	300	350
SafeTec T2-xxx-P		
Single Unit Weight	pounds [grams] .144 [65]	.161 [73]
SafeTube T2-40-P		
Single Unit Weight	pounds [grams] .093 [42]	
Single Unit DIN 43880 Dimension	1 TE	
Packaging Dimensions (HxWxL)	4.3 x 4.5 x 13.8" [109 x 115 x 352 mm]	
Minimum Order Quantity	28 Units	

inches
[mm]

Information contained in this document is subject to change at any time without notice.



Raycap

www.raycap.com

© 2017 Raycap All rights reserved.
G29-00-410 171020