

Pluggable Multi-Pole SPD
ProTec T2-ADV 1+1
 Class II • Type 2 • Type 1CA



Location of Use: Sub-Distribution Boards
 Network Systems: TT, TN-S
 Mode of Protection: L-N, N-PE
 Surge Ratings: $I_n = 20\text{ kA (8/20}\mu\text{s)}$
 $I_{max} = 50\text{ kA (8/20}\mu\text{s)}$
 IEC/EN/UL Category: Class II / Type 2 / Type 1CA
 Protective Elements: High Energy MOV and GDT
 Housing: Pluggable Design
 Compliance: IEC 61643-11:2011
 EN 61643-11:2012
 UL 1449, 4th edition

Technical Data

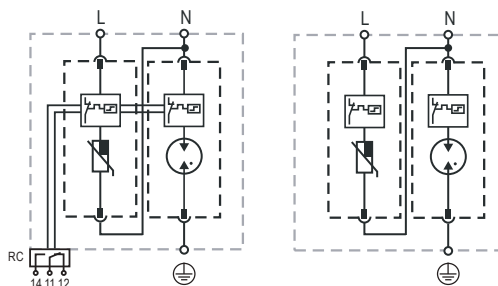
ProTec T2-ADV-xxx-1+1(-R)		75	150	300	350
IEC Electrical					
Nominal AC Voltage (50/60Hz)	U_o/U_n	60V	120V	240V	277V
Maximum Continuous Operating Voltage (AC)	(L-N) U_c	75V	150V	300V	350V
	(N-PE) U_c	305V	305V	305V	305V
Nominal Discharge Current (8/20 μs)	(L-N)/(N-PE) I_n	20 kA / 40 kA	20 kA / 40 kA	20 kA / 40 kA	20 kA / 40 kA
Maximum Discharge Current (8/20 μs)	(L-N)/(N-PE) I_{max}	50 kA / 65 kA	50 kA / 65 kA	50 kA / 65 kA	50 kA / 65 kA
Voltage Protection Level	(L-N)/(N-PE) U_p	600V / 1500V	1000V / 1500V	1300V / 1500V	1700V / 1500V
Follow Current Interrupt Rating	(N-PE) I_{fi}			100 A _{RMS}	
Response Time	(L-N)/(N-PE) t_A			< 25 ns / < 100 ns	
Back-Up Fuse (max)				160A gG	
Short-Circuit Current Rating (AC)	I_{SCCR}			50 kA	
TOV Withstand 5s	(L-N) U_T	114V	229V	337V	403V
TOV 120min	(L-N) U_T / mode	114V/withstand	229V/withstand	442V/safe fail	528V/safe fail
TOV Withstand 200ms	(N-PE) U_T			1200V	
Number of Ports				1	
UL Electrical					
Maximum Continuous Operating Voltage (AC)	(L-N)/(N-PE) MCOV	75V / 305V	150V / 305V	300V / 305V	350V / 305V
Voltage Protection Rating	(L-N)/(N-PE) VPR	400V / 1000V	600V / 1000V	900V / 1000V	1200V / 1000V
Nominal Discharge Current (8/20 μs)	(L-N)/(N-PE) I_n			20 kA / 20 kA	
Short-Circuit Current Rating (AC)	(L-N) SCCR	100 kA	200 kA	150 kA	200 kA
Mechanical					
Operating Temperature Range	T_a			-40 °F to +185 °F [-40 °C to +85 °C]	
Permissible Operating Humidity	RH			5%...95%	
Altitude				13123 ft [4000m]	
Terminal Screw Torque	M_{max}			39.9 lbf-in [4.5Nm]	
Conductor Cross Section (max)		2 AWG (Solid, Stranded) / 4 AWG (Flexible)			
		35 mm ² (Solid, Stranded) / 25 mm ² (Flexible)			
Mounting		35 mm DIN Rail, EN 60715			
Degree of Protection		IP 20			
Housing Material		Thermoplastic: Extinguishing Degree UL 94 V-0			
Thermal Protection		Yes			
Operating State / Fault Indication		Green Flag / Not Green Flag			
Remote Contacts (RC)		Optional			
RC Switching Capacity		AC: 250V/1A, 125V/1A; DC: 48V/0.5A, 24V/0.5A, 12V/0.5A			
RC Conductor Cross Section (max)		16 AWG (Solid) / 1.5mm ² (Solid)			
Order Information					
Order Code		75	150	300	350
ProTec T2-ADV-xxx-1+1		59.0244	59.0246	59.0248	59.0250
ProTec T2-ADV-xxx-1+1-R (with remote contacts)		59.0245	59.0247	59.0249	59.0251
ProTec T2-ADV-xxx-P		59.0203	59.0204	59.0205	59.0206
ProTube T2-ADV-40-P		59.0275	59.0275	59.0275	59.0275

ProTec T2-ADV 1+1

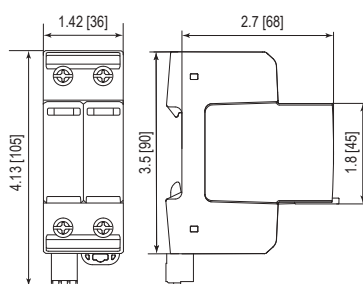
Internal Configuration

Legend

- L Line
- N Neutral
- ⊕ Protective Earth
- RC Remote Contacts Optional



Dimensions & Weights



Weights

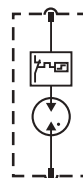
		75	150	300	350
ProTec T2-ADV-xxx-1+1					
Single Unit Weight	pounds	.500	.509	.524	.535
	grams	227	231	238	243
ProTec T2-ADV-xxx-1+1-R					
Single Unit Weight	pounds	.513	.522	.537	.548
	grams	233	237	244	249
Single Unit DIN 43880 Dimension		2 TE			
Packaging Dimensions (HxWxL)		4.3 x 4.5 x 13.8" [109 x 115 x 352 mm]			
Minimum Order Quantity		7 Units			

Plug Internal Configuration

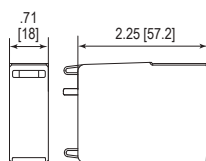
ProTec T2-ADV-xxx-P



ProTube T2-ADV-40-P



Dimensions & Weights



Weights

		75	150	300	350
ProTec T2-ADV-xxx-P					
Single Unit Weight	pounds	.120	.127	.143	.154
	grams	54	58	65	70
ProTube T2-ADV-40-P		40			
Single Unit Weight		pounds [grams] .093[42]			
Single Unit DIN 43880 Dimension		1 TE			
Packaging Dimensions (HxWxL)		4.3 x 4.5 x 13.8" [109 x 115 x 352 mm]			
Minimum Order Quantity		28 Units			

inches
[mm]

Information contained in this document is subject to change at any time without notice.

