

DATA SHEET

Pluggable Multi-Pole SPD
ProTec T2-ADV 3+1
 Class II • Type 2 • Type 1CA



Location of Use: Sub-Distribution Boards
 Network Systems: TT, TN-S
 Mode of Protection: L-N, N-PE
 Surge Ratings: $I_n = 20\text{ kA (8/20 }\mu\text{s)}$
 $I_{max} = 50\text{ kA (8/20 }\mu\text{s)}$
 IEC/EN/UL Category: Class II / Type 2 / Type 1CA
 Protective Elements: High Energy MOV and GDT
 Housing: Pluggable Design
 Compliance: IEC 61643-11:2011
 EN 61643-11:2012
 UL 1449, 4th edition

Technical Data

ProTec T2-ADV-xxx-3+1(-R)

		300	350
IEC Electrical			
Nominal AC Voltage (50/60Hz)	U_o/U_n	240V	277V
Maximum Continuous Operating Voltage (AC)	(L-N) U_c	300V	350V
	(N-PE) U_c	305V	305V
Nominal Discharge Current (8/20 μ s)	(L-N)/(N-PE) I_n	20 kA / 40 kA	20 kA / 40 kA
Maximum Discharge Current (8/20 μ s)	(L-N)/(N-PE) I_{max}	50 kA / 65 kA	50 kA / 65 kA
Voltage Protection Level	(L-N)/(N-PE) U_p	1300V / 1500V	1700V / 1500V
Follow Current Interrupt Rating	(N-PE) I_{fi}	100 A _{RMS}	
Response Time	(L-N)/(N-PE) t_A	< 25 ns / < 100 ns	
Back-Up Fuse (max)		160 A gG	
Short-Circuit Current Rating (AC)	I_{SCCR}	50 kA	
TOV Withstand 5s	(L-N) U_T	337V	403V
TOV 120min	(L-N) U_T / mode	442V / safe fail	528V / safe fail
TOV Withstand 200ms	(N-PE) U_T	1200V	
Number of Ports		1	

UL Electrical

Maximum Continuous Operating Voltage (AC)	(L-N)/(N-PE) MCOV	300V / 305V	350V / 305V
Voltage Protection Rating	(L-N)/(N-PE) VPR	900V / 1000V	1200V / 1000V
Nominal Discharge Current (8/20 μ s)	(L-N)/(N-PE) I_n	20 kA / 20 kA	
Short-Circuit Current Rating (AC)	(L-N) SCCR	150 kA	200 kA

Mechanical

Operating Temperature Range	T_a	-40 °F to +185 °F [-40 °C to +85 °C]	
Permissible Operating Humidity	RH	5%...95%	
Altitude		13123 ft [4000m]	
Terminal Screw Torque	M_{max}	39.9 lbf-in [4.5 Nm]	
Conductor Cross Section (max)		2 AWG (Solid, Stranded) / 4 AWG (Flexible)	
		35 mm ² (Solid, Stranded) / 25 mm ² (Flexible)	
Mounting		35mm DIN Rail, EN 60715	
Degree of Protection		IP 20	
Housing Material		Thermoplastic: Extinguishing Degree UL 94 V-0	
Thermal Protection		Yes	
Operating State / Fault Indication		Green Flag / Not Green Flag	
Remote Contacts (RC)		Optional	
RC Switching Capacity		AC: 250V/1A, 125V/1A; DC: 48V/0.5A, 24V/0.5A, 12V/0.5A	
RC Conductor Cross Section (max)		16 AWG (Solid) / 1.5 mm ² (Solid)	

Order Information

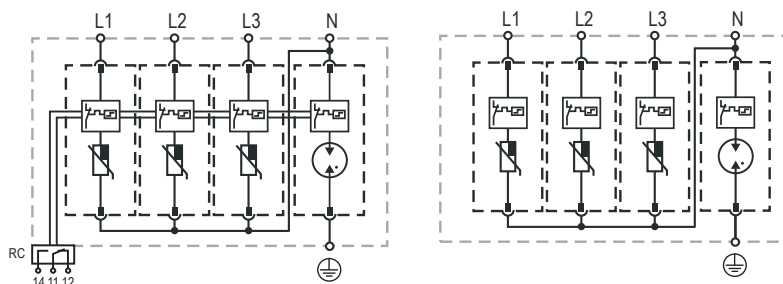
Order Code	300	350
ProTec T2-ADV-xxx-3+1	59.0256	59.0258
ProTec T2-ADV-xxx-3+1-R (with remote contacts)	59.0257	59.0259
ProTec T2-ADV-xxx-P	59.0204	59.0204
ProTube T2-ADV-40-P	59.0275	59.0275

ProTec T2-ADV 3+1

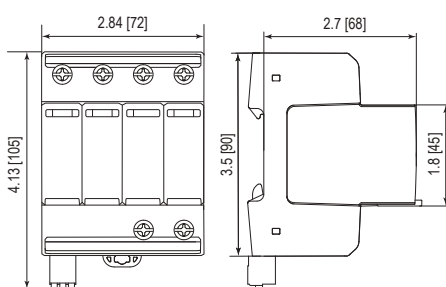
Internal Configuration

Legend

- L Line
- N Neutral
- ⊕ Protective Earth
- RC Remote Contacts Optional



Dimensions & Weights



Weights

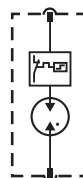
		300	350
ProTec T2-ADV-xxx-3+1			
Single Unit Weight	pounds [grams]	1.060 [481]	1.093 [496]
ProTec T2-ADV-xxx-3+1-R			
Single Unit Weight	pounds [grams]	1.080 [490]	1.113 [505]
Single Unit DIN 43880 Dimension		4 TE	
Packaging Dimensions (HxWxL)		4.3 x 4.5 x 13.8" [109 x 115 x 352 mm]	
Minimum Order Quantity		4 Units	

Plug Internal Configuration

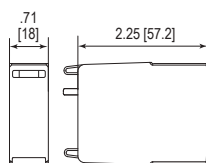
ProTec T2-ADV-xxx-P



ProTube T2-ADV-40-P



Dimensions & Weights



Weights

		300	350
ProTec T2-ADV-xxx-P			
Single Unit Weight	pounds [grams]	.143 [65]	.154 [70]
ProTube T2-ADV-40-P			
Single Unit Weight	pounds [grams]	.093 [42]	
Single Unit DIN 43880 Dimension		1 TE	
Packaging Dimensions (HxWxL)		4.3 x 4.5 x 13.8" [109 x 115 x 352 mm]	
Minimum Order Quantity		28 Units	

inches
[mm]

Information contained in this document is subject to change at any time without notice.



Raycap

www.raycap.com

© 2017 Raycap All rights reserved.
G29-00-417 171020