

Pluggable Single and Multi-Pole SPD  
**ProTube T2H 40 0+1**  
 Class II • Type 2



Location of Use: Main Distribution Boards  
 Network Systems: TT, TN-S  
 Mode of Protection: N-PE  
 Surge Ratings:  $I_n = 40 \text{ kA (8/20}\mu\text{s)}$   
 $I_{max} = 65 \text{ kA (8/20}\mu\text{s)}$   
 IEC/EN Category: Class II / Type 2  
 Protective Elements: High Energy GDT with Thermal Disconnect  
 Housing: Pluggable Design  
 Compliance: IEC 61643-11:2011  
 EN 61643-11:2012

**Technical Data**

**ProTube T2H-xxx-0+1(-R)**

**40**

**IEC Electrical**

Nominal AC Voltage (50/60Hz)	$U_o/U_n$	0V
Maximum Continuous Operating Voltage (AC)	$U_c$	305V
Nominal Discharge Current (8/20 $\mu\text{s}$ )	$I_n$	40kA
Maximum Discharge Current (8/20 $\mu\text{s}$ )	$I_{max}$	65kA
Voltage Protection Level	$U_p$	1500V
Follow Current Interrupt Rating	$I_{fi}$	100A <sub>RMS</sub>
Response Time	$t_A$	< 100ns
TOV Withstand 120min	$U_T$	1200V
Number of Ports		1

**Mechanical**

Operating Temperature Range	$T_a$	-40 °F to +185 °F [-40 °C to +85 °C]
Permissible Operating Humidity	RH	5%...95%
Altitude		13123 ft [4000m]
Terminal Screw Torque	$M_{max}$	39.9 lbf-in [4.5Nm]
Conductor Cross Section (max)		2 AWG (Solid, Stranded) / 4 AWG (Flexible) 35 mm <sup>2</sup> (Solid, Stranded) / 25 mm <sup>2</sup> (Flexible)
Mounting		35 mm DIN Rail, EN 60715
Degree of Protection		IP 20
Housing Material		Thermoplastic: Extinguishing Degree UL 94 V-0
Thermal Protection		Yes
Operating State / Fault Indication		Green Flag / Not Green Flag
Remote Contacts (RC)		Optional
RC Switching Capacity		AC: 250V/1A, 125V/1A; DC: 48V/0.5A, 24V/0.5A, 12V/0.5A
RC Conductor Cross Section (max)		16 AWG (Solid) / 1.5 mm <sup>2</sup> (Solid)

**Order Information**

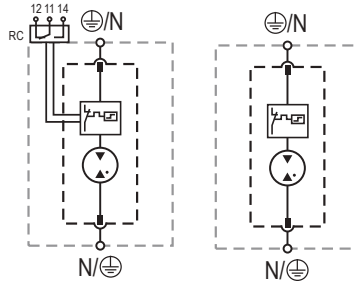
Order Code	<b>40</b>
ProTube T2H-xxx-0+1	59.0341
ProTube T2H-xxx-0+1-R (with remote contacts)	59.0342
ProTube T2H-40-P	59.0323

## ProTube T2H 40 0+1

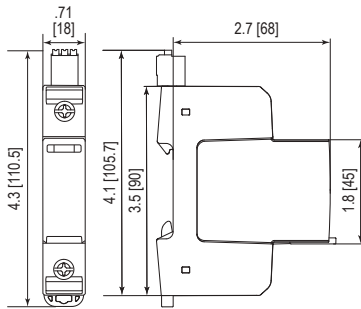
### Internal Configuration

#### Legend

- L Line
- N Neutral
- ⊕ Protective Earth
- RC Remote Contacts Optional



### Dimensions & Packaging

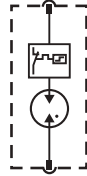


#### Dimensions & Packaging

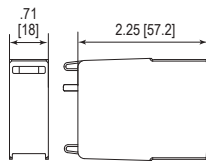
<b>ProTube T2H-xxx-0+1</b>		<b>40</b>
Single Unit Weight	pounds [grams]	.255 [116]
<b>ProTube T2H-xxx-0+1-R</b>		<b>40</b>
Single Unit Weight	pounds [grams]	.275 [125]
Single Unit DIN 43880 Dimension		1 TE
Packaging Dimensions (HxWxL)		4.3 × 4.5 × 13.8" [109 × 115 × 352 mm]
Minimum Order Quantity		12 Units

### Plug Internal Configuration

#### ProTube T2H-40-P



### Dimensions & Packaging



#### Dimensions & Packaging

<b>ProTube T2H-40-P</b>		<b>40</b>
Single Unit Weight	pounds [grams]	.093 [42]
Single Unit DIN 43880 Dimension		1 TE
Packaging Dimensions (HxWxL)		4.3 × 4.5 × 13.8" [109 × 115 × 352 mm]
Minimum Order Quantity		28 Units

inches  
[mm]

Information contained in this document is subject to change at any time without notice.

