

Combined Lightning Current and Surge Arrester
ProTec ZP T1H 3+0
 Class I • Class II • Type 1 • Type 2



Location of Use: Main Distribution Boards,
 40mm Busbar Systems
 Network Systems: TN-C
 Mode of Protection: L-PEN
 Surge Ratings: $I_{imp} = 12.5\text{ kA (10/350}\mu\text{s)}$
 $I_n = 20\text{ kA (8/20}\mu\text{s)}$
 IEC/EN: Class I+II / Type 1+2
 Technology: Hybrid
 Protective Elements: GDT in series with High Energy MOV
 Leakage Current: No
 Line Follow Current: No
 Housing: Compact design
 Compliance: IEC 61643-11:2011
 EN 61643-11:2012

Technical Data

ProTec ZP T1H-xxx-3+0-R

300

IEC Electrical

Nominal AC Voltage (50/60Hz)	U_o/U_n	230/400V
Maximum Continuous Operating Voltage (AC)	U_c	300 V
Nominal Discharge Current (8/20 μs)	I_n	20 kA
Maximum Discharge Current (8/20 μs)	I_{max}	50 kA
Impulse Discharge Current (10/350 μs)	I_{imp}	12.5 kA
Specific Energy	W/R	39 kJ/ Ω
Charge	Q	6.25As
Voltage Protection Level	U_p	1500V
Response Time	t_A	< 100ns
Back-Up Fuse (max)		315 A gG / 250 A gG
Short-Circuit Current Rating (AC)	I_{SCCR}	25 kA / 50 kA
TOV Withstand 120min	U_T	442 V
Number of Ports		1

Mechanical

Operating Temperature Range	T_a	-40 °F to +185 °F [-40 °C to +85 °C]
Permissible Operating Humidity	RH	5%...95%
Altitude		13123 ft [4000 m]
Terminal Screw Torque	M_{max}	39.9 lbf-in [4.5 Nm]
Conductor Cross Section (max)		35mm ² (Solid, Stranded) / 25mm ² (Flexible) 2 AWG (Solid, Stranded) / 4 AWG (Flexible)
Mounting		40mm Busbar Systems
Degree Of Protection		IP 30 (in combination with cover)
Housing Material		Thermoplastic: Extinguishing Degree UL 94 V-0
Function Monitoring		Yes
Operating State / Fault Indication		Green Flag / Not Green Flag
Remote Contacts (RC)		Yes
RC Switching Capacity		AC: 250V/ 1A, 125V/ 1A; DC: 48V/0.5A, 24V/0.5A, 12V/0.5A
RC Conductor Cross Section (max)		1.5mm ² (Solid) / 16 AWG (Solid)

Order Information

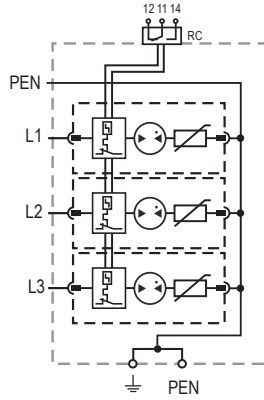
Order Code	300
ProTec ZP T1H-xxx-3+0-R	59.0360

ProTec ZP T1H 3+0

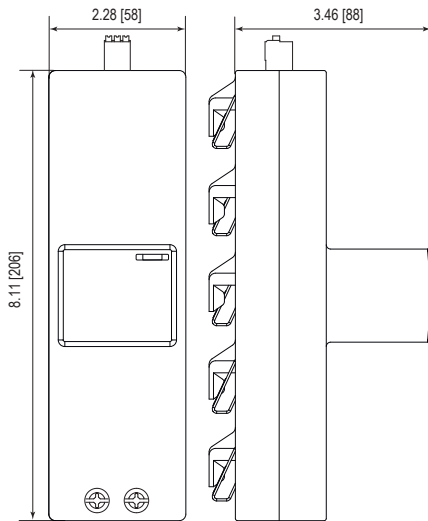
Internal Configuration

Legend

- L Line
- ⊥ Protective Earth
- PEN Combined Protective Ground & Neutral



Dimensions & Weights



Weights

ProTec ZP T1H-xxx-3+0-R		300
Single Unit Weight	pounds [grams]	2.217 [1006]
Single Unit		3 modules
Packaging Dimensions (HxWxL)		2.9 x 4.5 x 8.6" [75 x 116 x 220 mm]
Minimum Order Quantity		1 Unit

inches
[mm]

Information contained in this document is subject to change at any time without notice.

RoHS COMPLIANT  CE